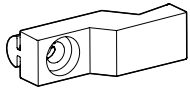
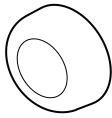


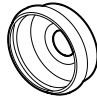
PARTS AND HARDWARE LISTING / LISTE DES PIÈCES ET QUINCAILLERIE



11



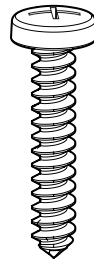
12



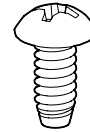
13



14



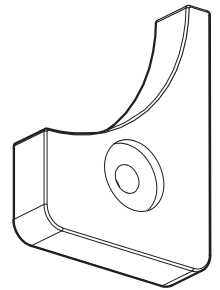
15



16



17



18

ITEM	TEM	PARTS AND HARDWARE / PIÈCES ET QUINCAILLERIE	QTY
1	FA-WJAMB-B-XX	WALL JAMB / JAMBAGE	2
2A		NARROW FIXED PANEL / PANNEAU FIXE ÉTROIT	1
2B		LARGE FIXED PANEL / PANNEAU FIXE LARGE	1
3	COEX-FA120-74	GASKET WITH SMALL FLANGE / JOINT AVEC PETITE BRIDE	1
4	COEX-FA140-66	GASKET WITH LONG FLANGE / JOINT AVEC LONG BRIDE	1
5	FAX323-RAIL-XX FAX363-RAIL-XX	RAIL / RAIL	1 SET
6	COEX-FA100-73	DOOR PANEL SIDE GASKET / JOINT LATÉRAL POUR LE PANNEAU DE PORTE	1
7		DOOR PANEL / PANNEAU DE PORTE	1
8	FA-HANDLE-XX	HANDLE / POIGNÉE	2
9	FA-B-ROLLER	BOTTOM ROLLER / ROULEAU INFÉRIEUR	2
10	FA-T-ROLLER	TOP ROLLER / ROULEAU SUPÉRIEUR	2
11	FA-CLIP	GLASS SUPPORT / SUPPORT DE VERRE	4
12		SCREW CAP / CAPUCHON COUVRE-VIS	12
13		BACK SCREW CAP / L'ARRIÈRE DU CAPUCHON COUVRE-VIS	12
14		WALL PLUG / CHEVILLE	6
15		PAN HEAD SCREW / VIS À TÊTE PAN	14
16		SCREW / VIS	4
17		PAN SELF DRILLING SCREW #8 - 3/8" / VIS PAN AUTO-PERÇANTE #8 - 3/8"	6
18	EA-STOPPER-XX	STOPPER / STOPPER	8