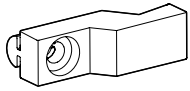
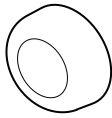


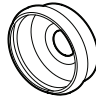
PARTS AND HARDWARE LISTING / LISTE DES PIÈCES ET QUINCAILLERIE



11



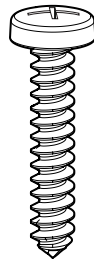
12



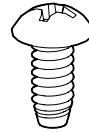
13



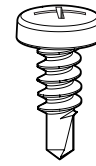
14



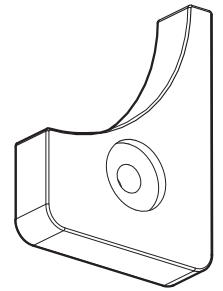
15



16



17



18

ITEM	Part No.	PARTS AND HARDWARE / PIÈCES ET QUINCAILLERIE	QTY
1	FA-WJAMB-B-XX	WALL JAMB / JAMBAGE	2
2		FIXED PANEL / PANNEAU FIXE	2
3	MAGNET-EA-SET-75	MAGNETIC GASKET / JOINT MAGNÉTIQUE	2
4	COEX-FA120-74	FIX PANEL GASKET / JOINT LATÉRAL POUR LE PANNEAU FIXE	2
5	FAX324-RAIL-XX FAX364-RAIL-XX	RAIL / RAIL	2
6	COEX-FA100-73	DOOR PANEL SIDE GASKET / JOINT LATÉRAL POUR LE PANNEAU DE PORTE	2
7		DOOR PANEL / PANNEAU DE PORTE	2
8	FA-HANDLE-XX	HANDLE / POIGNÉE	2
9	FA-B-ROLLER	BOTTOM ROLLER / ROULEAU INFÉRIEUR	4
10	FA-T-ROLLER	TOP ROLLER / ROULEAU SUPÉRIEUR	4
11	FA-CLIP	GLASS SUPPORT / SUPPORT DE VERRE	4
12		SCREW CAP / CAPUCHON COUVRE-VIS	12
13		BACK SCREW CAP / L'ARRIÈRE DU CAPUCHON COUVRE-VIS	12
14		WALL PLUG / CHEVILLE	6
15		PAN HEAD SCREW / VIS À TÊTE PAN	14
16		SCREW / VIS	4
17		PAN SELF DRILLING SCREW #8 - 3/8" / VIS PAN AUTO-PERÇANTE #8 - 3/8"	6
18	EA-STOPPER-XX	STOPPER / STOPPER	8