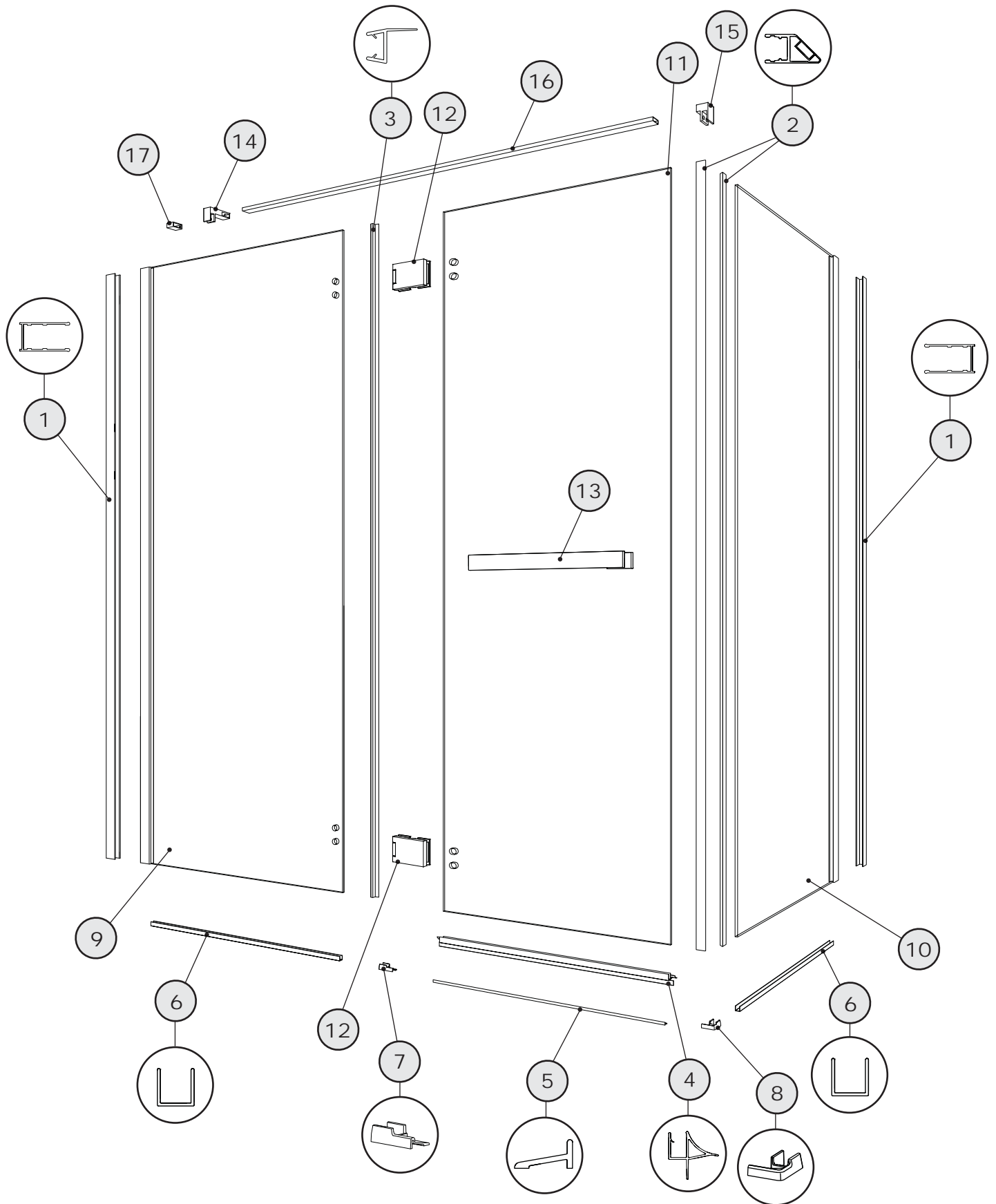


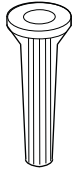
PARTS LISTING / LISTE DES PIÈCES

PJR4136, PJR4736, PJR5936



PARTS LISTING / LISTE DES PIÈCES

HARDWARE LISTING / LISTE DE QUINCAILLERIE



18



19



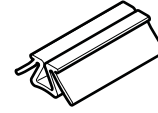
20



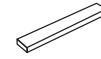
21



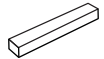
22



23



24



25

ITEM	FLEURCO CODE	PARTS LISTING / LISTE DES PIÈCES	QTY
1	PLAT-WJAMB-33-79	WALL JAMB / JAMBAGE	2
	++15419-80		
2	MAGNET-EA-SET-75	MAGNETIC GASKET / JOINT MAGNÉTIQUE	2
3	COEX 270	MID GASKET / JOINT LATÉRAL	1
4	COEX-297	BOTTOM DOOR GASKET / JOINT INFÉRIEUR DE LA PORTE	1
5	PLAT-THRESH-33-72	THRESHOLD / SEUIL	1
	++15405		
6	NA/PJ-UCHANNEL-42-XX	U-CHANNEL / PROFILÉ EN «U»	2
7	PLPCLP-(L)(R)-XX	THRESHOLD ANCHOR / ANCRAGE DU SEUIL	1
8	PLRCLP-(L)(R)-XX	CORNER THRESHOLD ANCHOR / ANCRAGE DU SEUIL DE COIN	1
9		FIXED PANEL / PANNEAU FIXE	1
10		RETURN PANEL / PANNEAU DE RETOUR	1
11		DOOR PANEL / PANNEAU DE PORTE	1
12	HINGEXPJ	HINGE / CHARNIÈRE	2
13	PJ-TOWELBAR18-XX	TOWEL BAR / PORTE SERVIETTE	1
14	PJ-BRACKET-S-XX	FIXED PANEL SUPPORT / SYSTÈME DE SUPPORT POUR PANNEAU FIXE	1
15	PJC-BRACKET-RP-XX	RETURN PANEL SUPPORT / SYSTÈME DE SUPPORT POUR PANNEAU DE RETOUR	1
16	PJ-BAR-XX-58	SUPPORT BAR / BARRE DE SUPPORT	1
	LAVBAR-33-70		
17	PJ-BRACKET-XX	WALL SUPPORT / SUPPORT MURAL	1
	LAVBRACKET-33		
18		WALL PLUG / CHEVILLE	7
19		PAN SELF-DRILLING SCREW (1 ¼") / VIS PAN AUTO-PERÇANTE # 8 (1 ¼")	6
20		PAN SELF-DRILLING SCREW # 8 (¾") / VIS PAN AUTO-PERÇANTE # 8 (¾")	6
21		BACK SCREW CAP / L'ARRIÈRE DU CAPUCHON COUVRE-VIS	7
22		SCREW CAP / CAPUCHON COUVRE-VIS	7
23	PV-5681	2" SPACING BLOCK / BLOC ESPACEUR 2"	2
24		CLEAR SETTING BLOCK (1/16") / BLOC NIVEAU TRANSPARENT (1/16")	2
25		CLEAR SETTING BLOCK (1/8") / BLOC NIVEAU TRANSPARENT (1/8")	2

LEGEND / LÉGENDE

XX = FINISH/FINI (11, 25, 33)
 ** = LENGTH / LONGUEUR (54, 60, 79, 86 ETC)
 ++ = CODE / CODE (AC, ABN)
 (L)(R) = LEFT OR RIGHT / GAUCHE OU DROITE