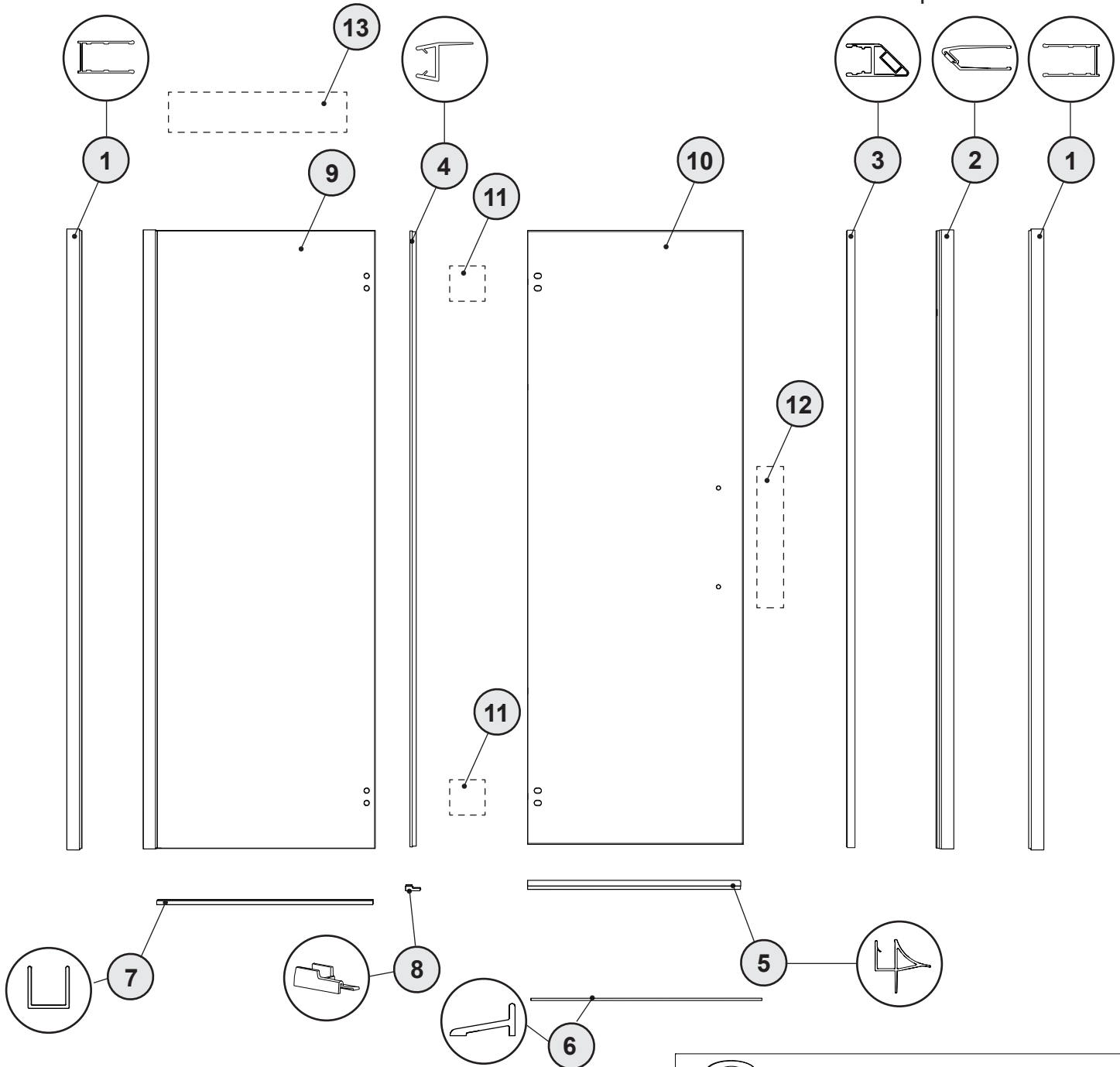
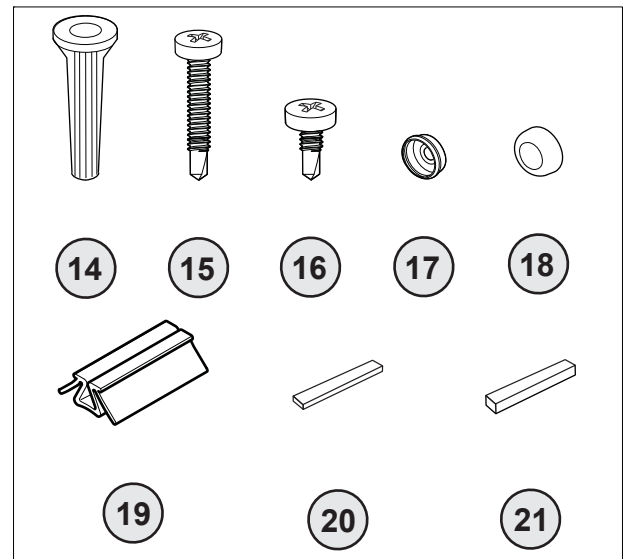


PARTS LISTING / LISTE DES PIÈCES

PXLP33 to PXLP60 | PGLP33 to PGLP60



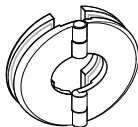
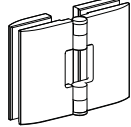
SUPPORT SHELF / SUPPORT ÉTAGÈRE	
<p>GCGS17-10</p> <p>17" GLASS SHELF ÉTAGÈRE EN VERRE 17"</p>	<p>GCGS10-10</p> <p>10" GLASS SHELF ÉTAGÈRE EN VERRE 10"</p>
<p>GSBRACKETUV-XX-10SR GSBRACKETWM-XX-10R</p> <p>ROUND BRACKET / SUPPORT ROND</p>	<p>GSBRACKETUV-XX-10S GSBRACKETWM-XX-10S</p> <p>SQUARE BRACKET / SUPPORT CARRÉ</p>






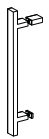
PARTS LISTING / LISTE DES PIÈCES

	PART #	PARTS LISTING / LISTE DES PIÈCES	QTY
1	PLAT-WJAMB-xx-79	WALL JAMB / JAMBAGE	2
	++15419-80		
2	PLAT-MAGEXP-xx-79	MAGNETIC EXPANDER / EXTENSEUR MAGNÉTIQUE	1
	++15421-80		
3	MAGNET2-10DX-80 & MAGNET2-10SX-80	MAGNETIC GASKET / JOINT MAGNÉTIQUE	1
4	COEX314-80	MID GASKET / JOINT LATÉRAL	1
5	COEX-294	BOTTOM DOOR GASKET / JOINT INFÉRIEUR DE LA PORTE	1
6	PLAT-THRESH-xx-72	THRESHOLD / SEUIL	1
	++15405		
7	PLAT-UCHANNEL-xx-72	U-CHANNEL / PROFILÉ EN «U»	1
	**15449-10-80		
8	PXLPCLP-L-xx & PXLPCLP-R-xx	THRESHOLD ANCHOR / ANCRAGE DU SEUIL	1
9		FIXED PANEL / PANNEAU FIXE	1
10		DOOR PANEL / PANNEAU DE PORTE	1
11		HINGE (see chart below) / CHARNIÈRE (voir le tableau ci-dessous)	2
12		HANDLE (see chart below) / POIGNÉE (voir le tableau ci-dessous)	1
13		SUPPORT SYSTEM (see chart page 1 & 2) / SYSTÈME DE SUPPORT (voir le page 1 & 2)	1
		HARDWARE LISTING / LISTE DE QUINCAILLERIE	QTY
14		WALL PLUGS / CHEVILLES	7
15		PAN SELF-DRILLING SCREW # 8 (1 ¼") / VIS PAN AUTO-PERÇANTE # 8 (1 ¼")	6
16		PAN SELF-DRILLING SCREW # 8 (¾") / VIS PAN AUTO-PERÇANTE # 8 (¾")	6
17		BACK SCREW CAP / L'ARRIÈRE DU CAPUCHON COUVRE-VIS	7
18		SCREW CAP / CAPUCHON COUVRE-VIS	7
19		2" SPACING BLOCK / BLOC ESPACEUR 2"	2
20		CLEAR SETTING BLOCK (¼") / BLOC NIVEAU TRANSPARENT (¼")	2
21		CLEAR SETTING BLOCK (⅜") / BLOC NIVEAU TRANSPARENT (⅜")	2

11 HINGE OPTIONS / SÉLECTION DES CHARNIÈRES

Q	M
HINGExx-10	HINGExxSQ-10
	

12 HANDLE OPTIONS / SÉLECTION DES POIGNÉES

HANDLEXX-16S	HANDLEXX-16C	HANDLEXX-16T	HANDLEXX-16D
			

13 SUPPORT SYSTEM OPTIONS / SÉLECTION DES SYSTÈMES DE SUPPORT

SUPPORT BAR (option "A") / BARRE DE SUPPORT (option «A»)

