

PARTS LISTING / LISTE DES PIÈCES

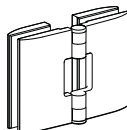
ITEM	PART #	PARTS LISTING / LISTE DES PIÈCES	QTY
1	PLAT-WJAMB-xx-79	WALL JAMB / JAMBAGE	2
	++15419-80		
2	PLAT-MAGEXP-xx-79	MAGNETIC EXPANDER / EXTENSEUR MAGNÉTIQUE	1
	++15421-80		
3	MAGNET-PLT-SET-79-33 MAGNET-PLT-SET-79 MAGNET2-10DX-80 & MAGNET2-10SX-80	MAGNETIC GASKET / JOINT MAGNÉTIQUE	1
4	COEX314-80	MID GASKET / JOINT LATÉRAL	1
5	COEX-294	BOTTOM DOOR GASKET / JOINT INFÉRIEUR DE LA PORTE	1
6	PLAT-THRESH-xx-72	THRESHOLD / SEUIL	1
	++15405		
7	PLAT-UCHANNEL-xx-72	U-CHANNEL / PROFILÉ EN «U»	1
	**15449-10-80		
8	PXLPCLP-L-xx & PXLPCLP-R-xx	THRESHOLD ANCHOR / ANCRAGE DU SEUIL	1
9		FIXED PANEL / PANNEAU FIXE	1
10		DOOR PANEL / PANNEAU DE PORTE	1
11	HINGE _{xx} SQ-10	HINGE (see chart below) / CHARNIÈRE (voir le tableau ci-dessous)	2
12	HANDLE _{xx} -16S	HANDLE / POIGNÉE	1
13	PVBAR _{xx} -02 (PMLP45)	SUPPORT SYSTEM / SYSTÈME DE SUPPORT	1
	PVBAR _{xx} -03 (PMLP57)		
ITEM		HARDWARE LISTING / LISTE DE QUINCAILLERIE	QTY
14		WALL PLUGS / CHEVILLES	7
15		PAN SELF-DRILLING SCREW # 8 (1 1/4") / VIS PAN AUTO-PERÇANTE # 8 (1 1/4")	6
16		PAN SELF-DRILLING SCREW # 8 (3/8") / VIS PAN AUTO-PERÇANTE # 8 (3/8")	6
17		BACK SCREW CAP / L'ARRIÈRE DU CAPUCHON COUVRE-VIS	7
18		SCREW CAP / CAPUCHON COUVRE-VIS	7
19	PV-5681	2" SPACING BLOCK / BLOC ESPACEUR 2" 1/16	2
20		CLEAR SETTING BLOCK (") / BLOC NIVEAU TRANSPARENT (")	2
21		CLEAR SETTING BLOCK (1/8") / BLOC NIVEAU TRANSPARENT (1/8")	2

LEGEND / LÉGENDE
 XX = FINISH/FINI (11, 25, 33)
 ** = LENGTH / LONGUEUR (54, 60, 79, 86 ETC)
 ++ = CODE / CODE (AC, ABN)
 (L)(R) = LEFT OR RIGHT / GAUCHE OU DROITE

11

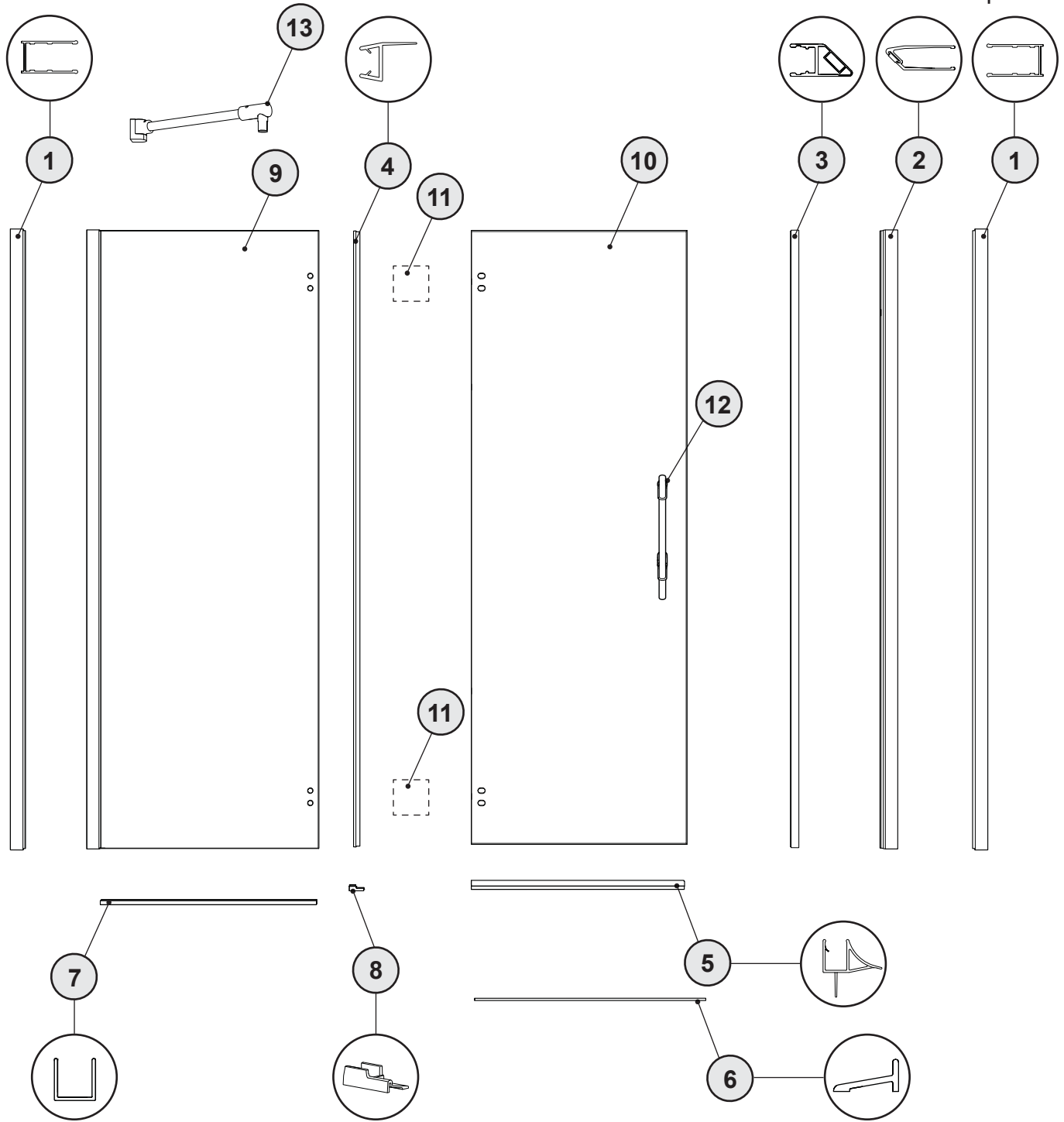
HINGE OPTIONS / SÉLECTION DES CHARNIÈRES

M

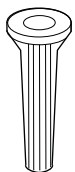


PARTS LISTING / LISTE DES PIÈCES

PMLP45 | PMLP57



HARDWARE LISTING / LISTE DE QUINCAILLERIE



14



15



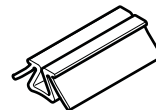
16



17



18



19



20



21