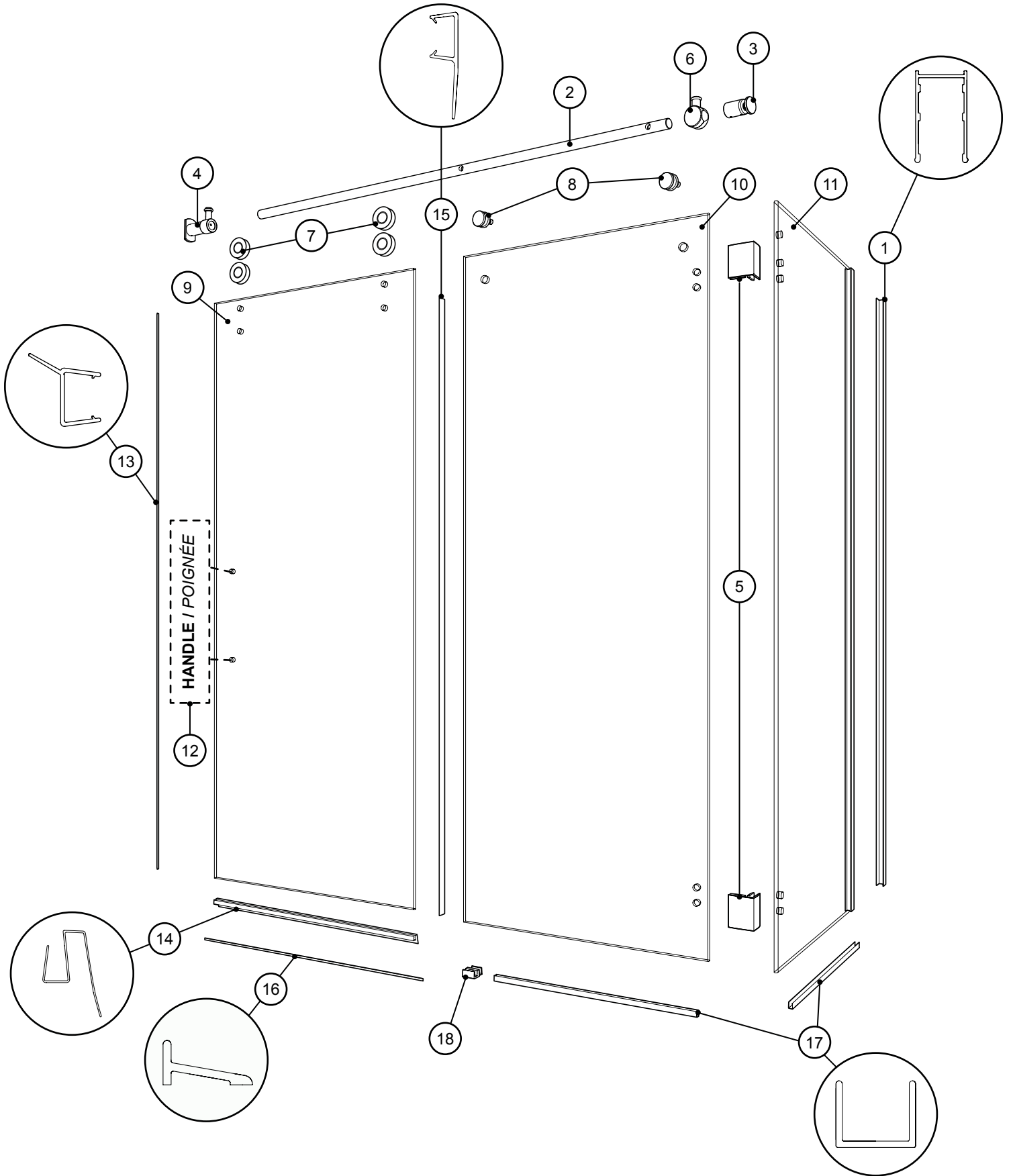
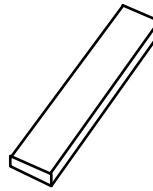


PARTS LISTING
LISTE DES PIÈCES

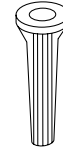


PARTS LISTING
LISTE DES PIÈCES

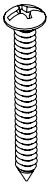
12 HANDLE OPTIONS / SÉLECTION DES POIGNÉES				
A	B	C	D	E



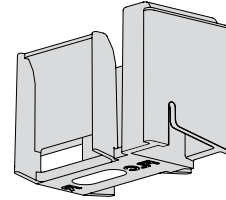
20



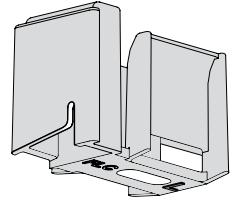
21



22



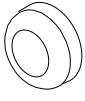
26



27



23



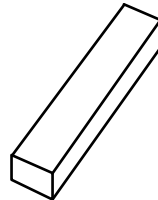
24



25



28



19

ITEM	PARTS AND HARDWARE / PIÈCES ET QUINCAILLERIE	QTY
1	WALL JAMB / JAMBAGE	1
2	RUNNING RAIL / BARRE DE ROULEMENT	1
3	RETURN PANEL BRACKET WITH GLASS MOUNT / SUPPORT DU PANNEAU DE RETOUR AVEC FIXATION DE VERRE	1
4	WALL BRACKET WITH BUILT-IN STOPPER / SUPPORT MURAL AVEC BUTOIR INTÉGRÉ	1
5	CORNER GLASS CLIP / SUPPORT DE VERRE DU COIN	2
6	STOPPER / BUTOIR	1
7	ROLLER / ROULETTE	4
8	GLASS FASTENER / FIXATION DE VERRE	2
9	DOOR PANEL / PANNEAU DE PORTE	1
10	FIXED PANEL / PANNEAU FIXE	1
11	RETURN PANEL / PANNEAU DE RETOUR	1
12	HANDLE (see chart above) / POIGNÉE (voir le tableau ci-dessus)	1
13	WALL SIDE GASKET / JOINT DU CÔTÉ DU MUR	1
14	BOTTOM DOOR GASKET / JOINT INFÉRIEUR DE LA PORTE	1
15	DOOR SIDE GASKET / JOINT LATÉRAL DE LA PORTE	1
16	THRESHOLD / SEUIL DE RÉTENTION	2
17	U-CHANNEL / PROFILÉ EN «U»	3
18	BOTTOM GUIDE / GUIDE INFÉRIEUR	1
19	CLEAR SETTING BLOCK (1/8") / BLOC NIVEAU TRANSPARENT (1/8")	4
20	CLEAR SETTING BLOCK (1/32") / BLOC NIVEAU TRANSPARENT (1/32")	4
21	WALL PLUG / CHEVILLE	3
22	SELF-DRILLING WALL SCREW #8 - 1 1/4" / VIS MURAL AUTO-PERÇANTE #8 - 1 1/4"	3
23	SELF DRILLING PANHEAD SCREWS #8 - 3/8" / VIS À TÊTE PAN AUTO-PERÇANTE #8 - 3/8"	3
24	SCREW CAP / CAPUCHON COUVRE-VIS	3
25	BACK SCREW CAP / L'ARRIÈRE DU CAPUCHON COUVRE-VIS	3