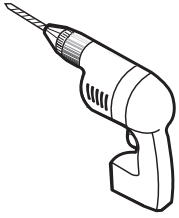
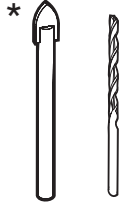


## TOOLS REQUIRED / OUTILS REQUIS



**DRILL**  
PERCEUSE



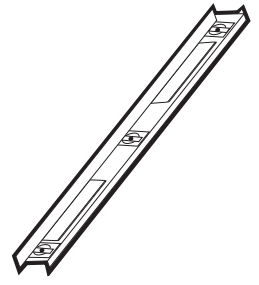
**1/4" & 1/8" DRILL BITS**  
MÈCHE 1/4" & 1/8"



**LONG NOSE LOCKING PLIERS (X2)**  
PINCE SERRE ÉTAU (X2)



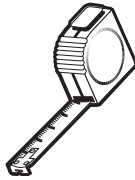
**SCREWDRIVER**  
TOURNEVIS



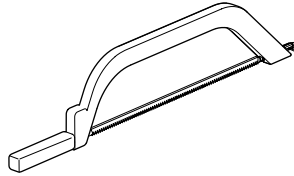
**LEVEL**  
NIVEAU



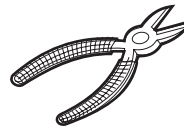
**PENCIL**  
CRAYON



**TAPE MEASURE**  
RUBAN À MESURER



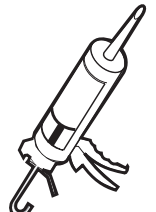
**HACKSAW**  
SCIE À MÉTAUX



**CUTTING PLIERS**  
PINCE COUPANTE



**MALLET**  
MAILLET

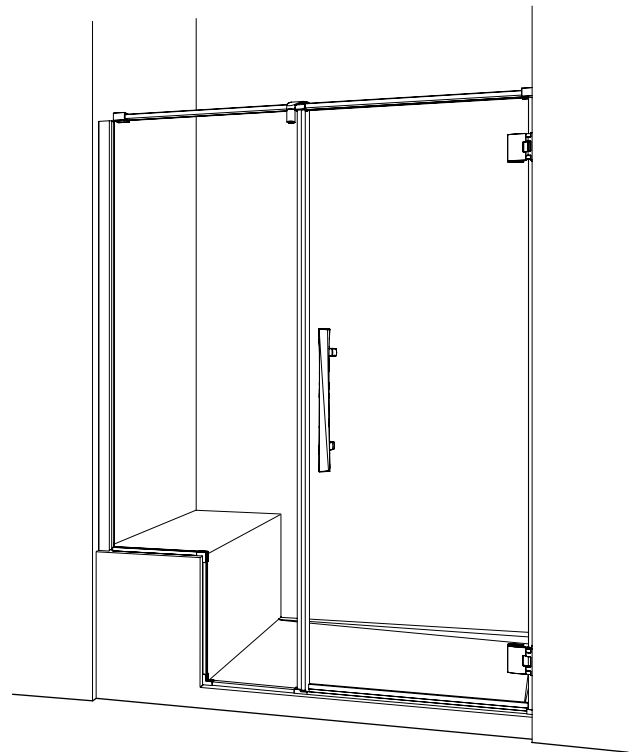
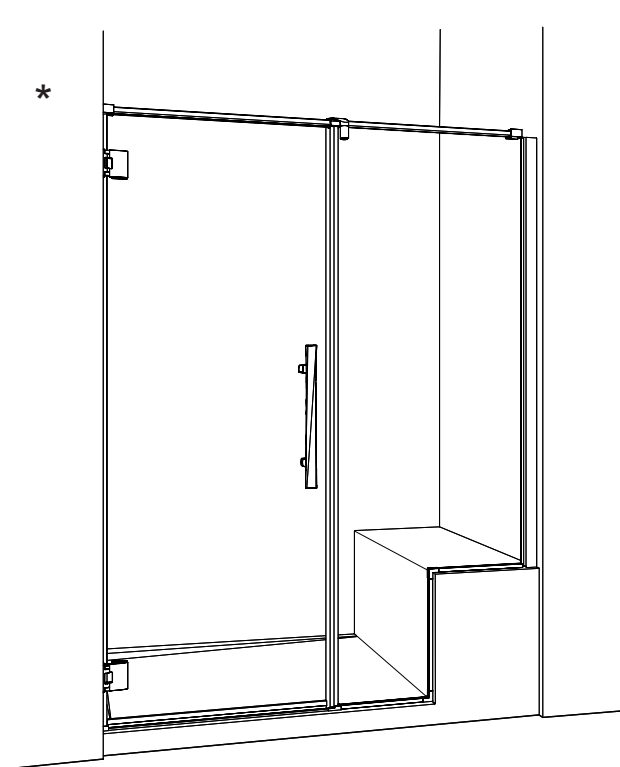


**SILICONE**  
SCELLANT

\* Use a 1/4" drill bit for ceramic when drilling into ceramic tiles

\* Utiliser une mèche de 1/4" destiné à céramique lors du perçage des tuiles en céramique.

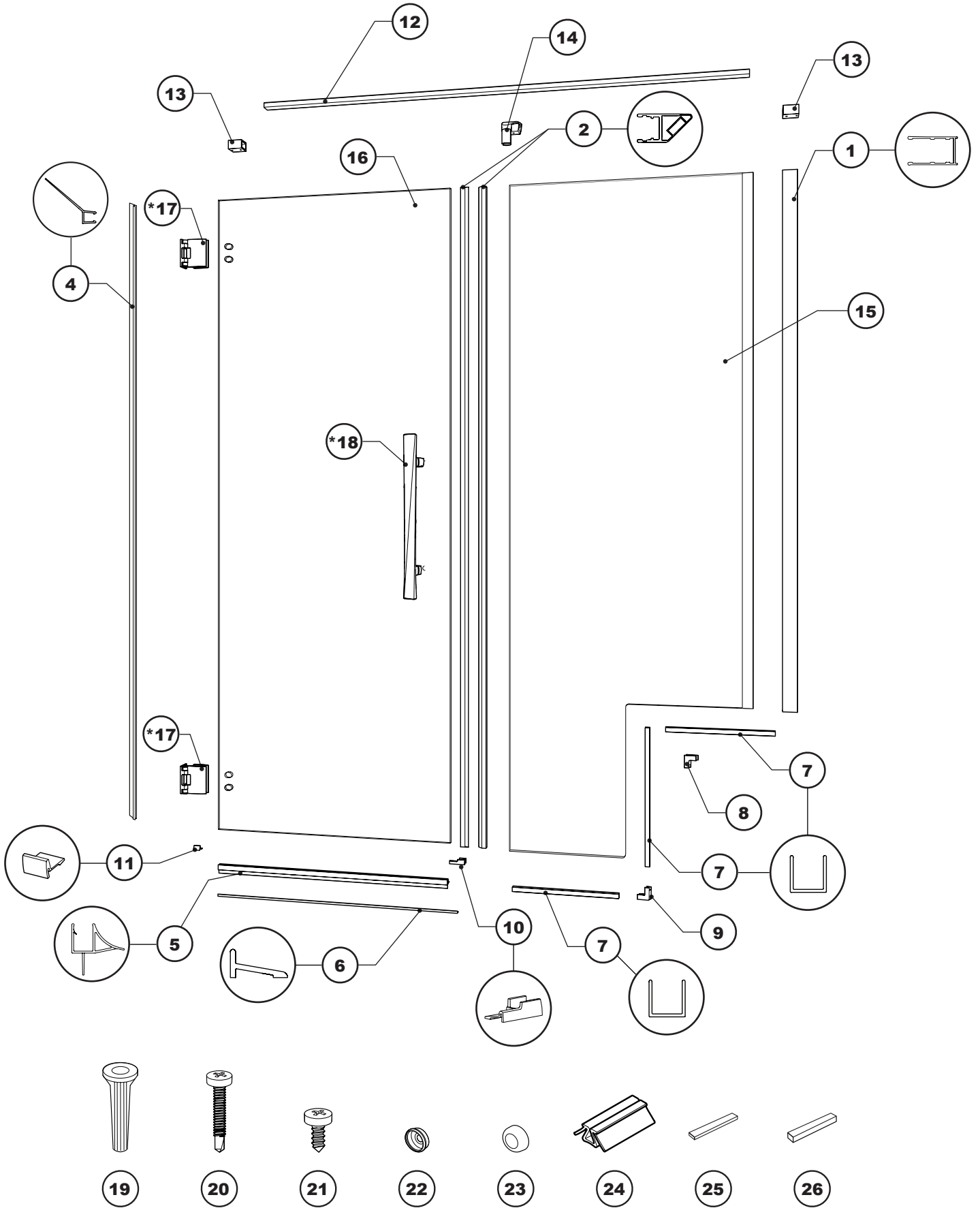
## POSSIBLE CONFIGURATIONS / CONFIGURATIONS POSSIBLES



\* This configuration is illustrated in this manual.

\* Cette configuration est illustrée dans ce manuel.

PARTS LISTING / LISTE DES PIÈCES



# PARTS LISTING / LISTE DES PIÈCES

ITEM	PARTS LISTING / LISTE DES PIÈCES	QTY
1	WALL JAMB / JAMBAGE	1
2	MAGNETIC GASKET / JOINT MAGNÉTIQUE	2
4	SIDE GASKET / JOINT LATÉRAL	1
5	BOTTOM DOOR GASKET / JOINT INFÉRIEUR DE LA PORTE	1
6	THRESHOLD / SEUIL	1
7	U-CHANNEL ( short, medium, and long ) / PROFILÉ EN «U» ( court, mi-long, et long )	3
8	TOP ELBOW / COUDE SUPÉRIEUR	1
9	BOTTOM ELBOW / COUDE INFÉRIEUR	1
10	THRESHOLD ANCHOR / ANCRAGE DU SEUIL	1
11	THRESHOLD ANCHOR END / ANCRAGE LATÉRAL DU SEUIL	1
12	SUPPORT BAR / BARRE DE SUPPORT	1
13	WALL MOUNT BRACKET / SUPPORT MURAL	2
14	GLASS MOUNT BRACKET / SUPPORT DE VERRE	1
15	FIXED PANEL / PANNEAU FIXE	1
16	DOOR PANEL / PANNEAU DE PORTE	1
17	HINGE ( see chart below ) / CHARNIÈRE ( voir le tableau ci-dessous )	2
18	HANDLE ( see chart below ) / POIGNÉE ( voir le tableau ci-dessous )	1
19	WALL PLUG / CHEVILLE	4
20	PAN SELF-DRILLING SCREW # 8 ( 1 ¼" ) / VIS PAN AUTO-PERÇANTE # 8 ( 1 ¼" )	3
21	PAN SELF-DRILLING SCREW # 8 ( ¾" ) / VIS PAN AUTO-PERÇANTE # 8 ( ¾" )	3
22	BACK SCREW CAP / L'ARRIÈRE DU CAPUCHON COUVRE-VIS	4
23	SCREW CAP / CAPUCHON COUVRE-VIS	4
24	2" SPACING BLOCK / BLOC ESPACEUR 2"	2
25	CLEAR SETTING BLOCK ( ¼" ) / BLOC NIVEAU TRANSPARENT ( ¼" )	4
26	CLEAR SETTING BLOCK ( ⅜" ) / BLOC NIVEAU TRANSPARENT ( ⅜" )	4

**17** **HINGE OPTIONS / SÉLECTION DES CHARNIÈRES**

Q	M	T	R

8

9

Elbows  
Coudes

**18** **HANDLE OPTIONS / SÉLECTION DES POIGNÉES**

A	B	C	D