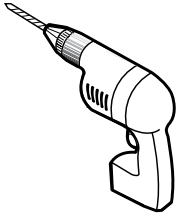


TOOLS REQUIRED / OUTILS REQUIS



DRILL
PERCEUSE



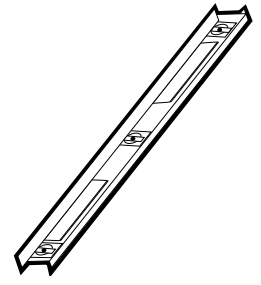
1/4" & 1/8" DRILL BITS
MÈCHE 1/4" & 1/8"



SCREWDRIVER
TOURNEVIS



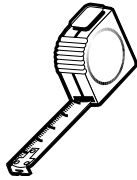
LONG NOSE LOCKING PLIERS (X2)
PINCE SERRE ÉTAU (X2)



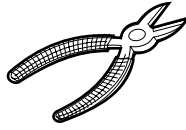
LEVEL
NIVEAU



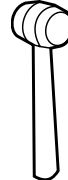
PENCIL
CRAYON



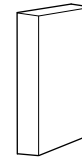
TAPE MEASURE
RUBAN À MESURER



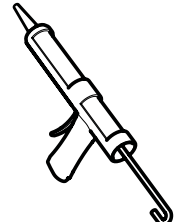
CUTTING PLIERS
PINCE COUPANTE



MALLET
MAILLET



BLOCK
BLOC



SILICONE
SCCELLANT

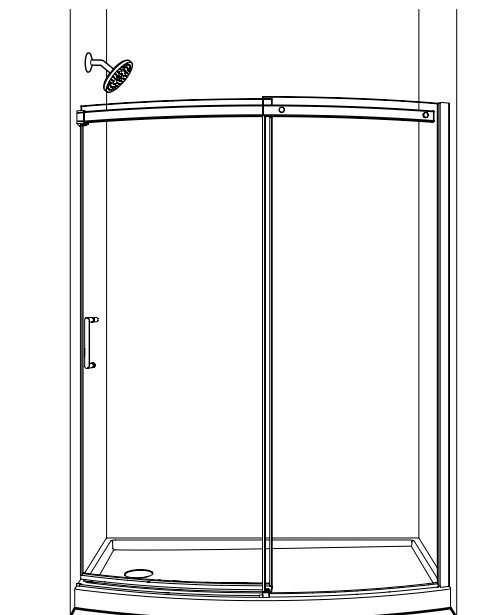
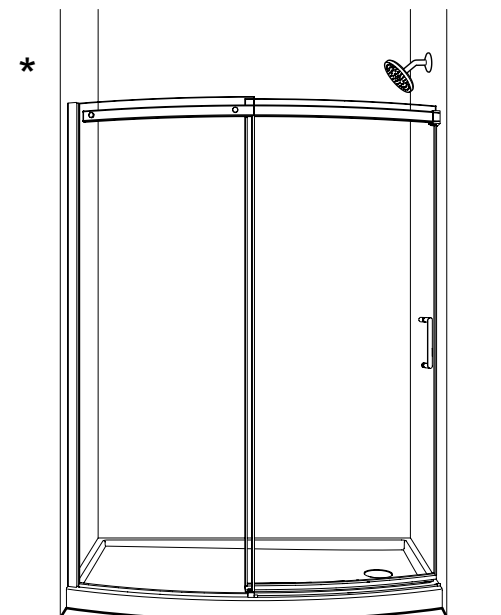
* Use a 1/4" drill bit when drilling into ceramic tiles

* Utiliser une mèche de 1/4" pour percer des tuiles en céramique.

POSSIBLE CONFIGURATIONS / CONFIGURATIONS POSSIBLES

Recommended installation configuration according to shower head position.

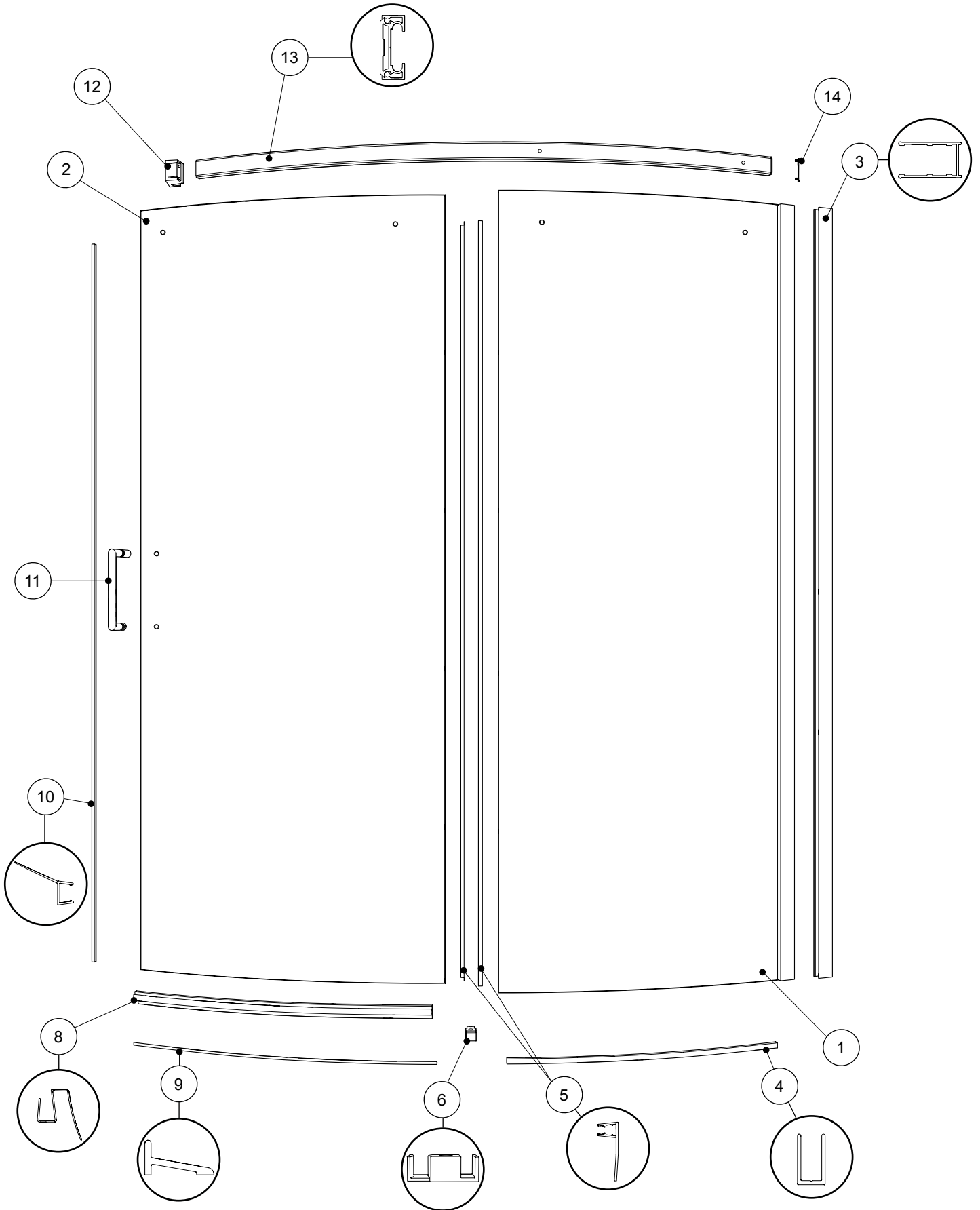
Configuration recommandée en fonction de la position de la tête de douche.



* This configuration illustrated in this manual.

* Cette configuration est illustrée dans ce manuel.

PARTS LISTING / LISTE DES PIÈCES



PARTS LISTING / LISTE DES PIÈCES

ITEM	PARTS LISTING / LISTE DES PIÈCES	QTY
1	FIXED PANEL / PANNEAU FIXE	1
2	DOOR PANEL / PANNEAU DE PORTE	1
3	WALL JAMB / JAMBAGE	1
4	U-CHANNEL / PROFILÉ EN "U"	1
5	SIDE GASKET / JOINT LATÉRAL DE LA PORTE	2
6	BOTTOM GUIDE / GUIDE INFÉRIEUR	1
7	THRESHOLD ANCHOR / L'ANCRAGE DU SEUIL	2
8	BOTTOM DOOR GASKET / JOINT INFÉRIEUR DE LA PORTE	1
9	THRESHOLD / SEUIL	1
10	SIDE DOOR GASKET / JOINT LATÉRAL DE LA PORTE	1
11	DOOR HANDLE / POIGNÉE DE PORTE	1
12	WALL MOUNT BRACKET / SUPPORT MURAL	1
13	RUNNING RAIL / BARRE DE ROULEMENT	1
14	RAIL CAP / CAPUCHON DE RAIL	1
ITEM	HARDWARE LISTING / LISTE DE QUINCAILLERIE	QTY
15	WALL PLUG / CHEVILLE	6
16	CLEAR SETTING BLOCK (1/16") / BLOC À NIVEAU TRANSPARENT (1/16")	2
17	CLEAR SETTING BLOCK (1/8") / BLOC À NIVEAU TRANSPARENT (1/8")	2
18	WHEEL / ROULETTE	2
19	WHEEL CAP / CAPUCHON DE ROULETTE	2
20	FASTENER / FIXATION DE VERRE	2
21	KEY / CLÉ	1
22	PAN HEAD SCREW / VIS PAN	4
23	SCREW / VIS	2
24	PAN SELF-DRILLING SCREW / VIS PAN AUTO-PERÇANTE	3
25	SCREW CAP / CAPUCHON COUVRE-VIS	3
26	BOTTOM GUIDE CAP / CAPUCHON DU GUIDE INFÉRIEUR	1
27	BACK SCREW CAP / L'ARRIÈRE DU CAPUCHON COUVRE-VIS	3

PARTS LISTING / LISTE DES PIÈCES

