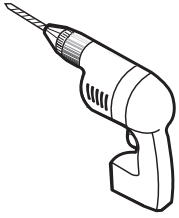
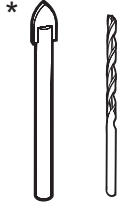


TOOLS REQUIRED / OUTILS REQUIS



DRILL
PERCEUSE



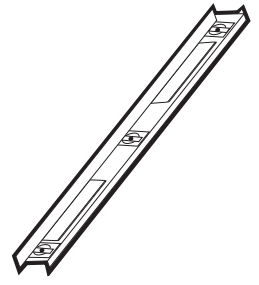
1/4" & 1/8" DRILL BITS
MÈCHE 1/4" & 1/8"



LONG NOSE LOCKING PLIERS (X2)
PINCE SERRE ÉTAU (X2)



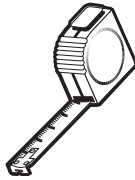
SCREWDRIVER
TOURNEVIS



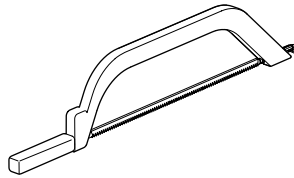
LEVEL
NIVEAU



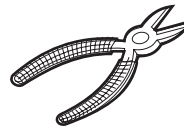
PENCIL
CRAYON



TAPE MEASURE
RUBAN À MESURER



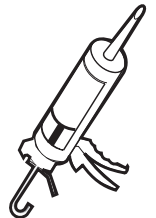
HACKSAW
SCIE À MÉTAUX



CUTTING PLIERS
PINCE COUPANTE



MALLET
MAILLET

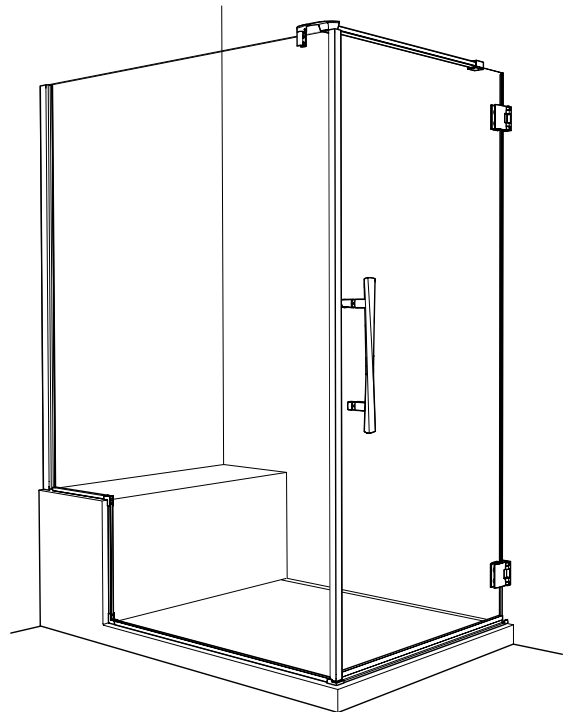
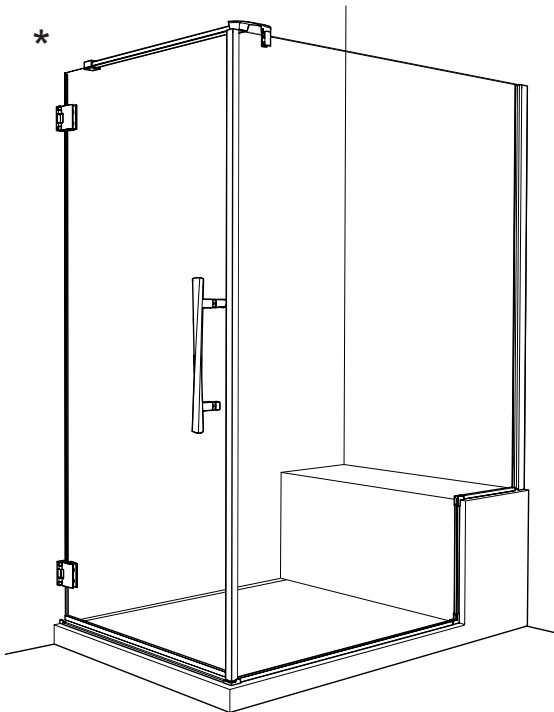


SILICONE
SCELLANT

* Use a 1/4" drill bit for ceramic when drilling into ceramic tiles

* Utiliser une mèche de 1/4" destiné à céramique lors du perçage des tuiles en céramique.

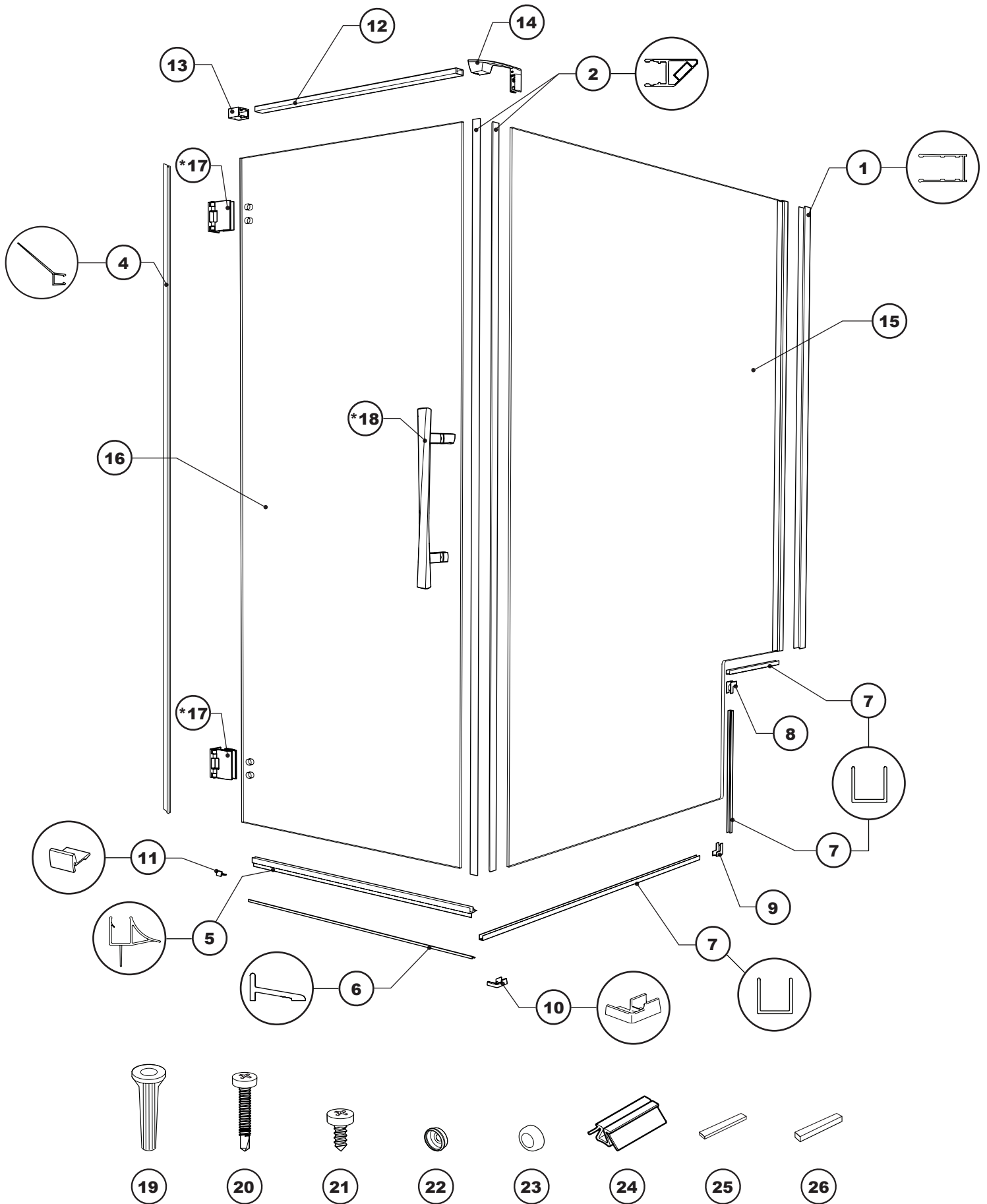
POSSIBLE CONFIGURATIONS / CONFIGURATIONS POSSIBLES



* This configuration and BSSU3660 base is illustrated in this manual.
The same configurations are possible with the ABAL3660 base.

* Cette configuration avec la base BSSU3660 est illustrée dans ce manuel.
Les mêmes configurations avec la base ABAL3660 sont possibles.

PARTS LISTING / LISTE DES PIÈCES



PARTS LISTING / LISTE DES PIÈCES

ITEM	PARTS LISTING / LISTE DES PIÈCES	QTY
1	WALL JAMB / JAMBAGE	1
2	MAGNETIC GASKET / JOINT MAGNÉTIQUE	2
4	SIDE GASKET / JOINT LATÉRAL	1
5	BOTTOM DOOR GASKET / JOINT INFÉRIEUR DE LA PORTE	1
6	THRESHOLD / SEUIL	1
7	U-CHANNEL (short, medium, and long) / PROFILÉ EN «U» (court, mi-long, et long)	3
8	TOP ELBOW / COUDE SUPÉRIEUR	1
9	BOTTOM ELBOW / COUDE INFÉRIEUR	1
10	THRESHOLD CORNER ANCHOR / ANCRAGE DU SEUIL DE COIN	1
11	THRESHOLD ANCHOR END / ANCRAGE LATÉRAL DU SEUIL	1
12	SUPPORT BAR / BARRE DE SUPPORT	1
13	WALL MOUNT BRACKET / SUPPORT MURAL	2
14	GLASS MOUNT BRACKET / SUPPORT DE VERRE	1
15	RETURN PANEL / PANNEAU DE RETOUR	1
16	DOOR PANEL / PANNEAU DE PORTE	1
17	HINGE (see chart below) / CHARNIÈRE (voir le tableau ci-dessous)	2
18	HANDLE (see chart below) / POIGNÉE (voir le tableau ci-dessous)	1
19	WALL PLUG / CHEVILLE	4
20	PAN SELF-DRILLING SCREW # 8 (1 ¼") / VIS PAN AUTO-PERÇANTE # 8 (1 ¼")	3
21	PAN SELF-DRILLING SCREW # 8 (¾") / VIS PAN AUTO-PERÇANTE # 8 (¾")	3
22	BACK SCREW CAP / L'ARRIÈRE DU CAPUCHON COUVRE-VIS	4
23	SCREW CAP / CAPUCHON COUVRE-VIS	4
24	2" SPACING BLOCK / BLOC ESPACEUR 2"	2
25	CLEAR SETTING BLOCK (¼") / BLOC NIVEAU TRANSPARENT (¼")	4
26	CLEAR SETTING BLOCK (⅜") / BLOC NIVEAU TRANSPARENT (⅜")	4

