



FLEURCO™

TRENDBOOK

2026







From the Editors

Welcome to this year's Trendbook, a snapshot of where Fleurco is today and a preview of where we're headed. It's an exciting moment for us as we settle into our new headquarters, a space designed to support our growing team, expanding capabilities, and commitment to excellence. With a larger, more efficient warehouse, we're able to fulfill orders faster and better serve our customers across North America.

Our product offering continues to expand as we introduce new collections and refine the designs you already know and love. Innovation remains at the heart of everything we do, whether it's reimagining the modern shower experience, elevating everyday essentials, or exploring fresh ideas that shape the future of bathroom design.

As we grow, our mission stays the same: to be accessible, reliable, and continuously forward-thinking. We hope this Trendbook inspires your next project and gives you a glimpse of the exciting developments happening at Fleurco.

- The Fleurco Team

Meet Closiq, a sliding door made for corner units, with a unique 0–90° glide



As living spaces evolve, so does the way we design for them. The Closiq shower door is a refined solution for compact bathrooms, offering space-saving function without compromising on style. Designed to open inward, Closiq eliminates the need for clearance outside the shower, making it ideal for tight floor plans and modern layouts.

With clean lines and a minimalist profile, Closiq blends effortlessly into a contemporary interior, proving that intelligent design can be both beautiful and practical.



The Safest Shower Doors in the Industry

Protect your family with FleurcoSEKUR+ Safety Protection.

What is FleurcoSEKUR+?

FleurcoSEKUR+ is a transparent safety film bonded directly to the glass panel. In the event of breakage, the film holds the glass together, similar to a car windshield, providing an extra layer of protection for your home.

For years, Fleurco has relied on this trusted technology, continually enhancing its performance. Traditionally, the FleurcoSEKUR+ film was installed on the opposite face of our Microtek® Glass Protection face, our invisible water-repellent coating. Because FleurcoSEKUR+ lacked this treatment, it was required to be installed on the exterior side of the shower, resulting in the need for left or right configurations.

Introducing FleurcoSEKUR+ with EZ Clean

Our latest innovation combines FleurcoSEKUR+ Safety Protection with EZ Clean on one side, a new invisible coating that works like Microtek® but is applied directly to the safety film side. With EZ Clean, the side with the FleurcoSEKUR+ Safety Protection film is now water-repellent, making the door fully reversible and installation more flexible.

What does this mean for you?

Say goodbye to left-vs-right confusion! Doors treated with EZ Clean are now fully reversible, giving customers complete flexibility during installation. No advance decisions, just choose the opening direction on the spot.

EZ Clean is currently available on clear glass only.



5 Leading Trends for 2026

In 2026, the bathroom is no longer just a functional space - it's evolving into a true living area where wellness, design, and personality come together. The latest trends focus on texture, colour, and atmosphere, with a goal of creating spaces that awaken the senses while inspiring relaxation.

Here's a quick look at 5 leading trends that will transform our bathrooms in 2026.

1. Inspiration Spa

Wellness continues to shape bathroom design. Freestanding tubs, rainfall showers and ambient lighting are paired with natural materials like stone, marble and bamboo to create a calming sanctuary. Heated floors, plush towels and scented candles add an extra touch of comfort. This trend encourages us to slow down, turning everyday routines into soothing, restorative rituals.

2. Let the sunshine!

A standout trend for 2026? Warm, sun-drenched tones flooding our bathrooms! Shades of golden yellow, soft orange and amber bring vibrant energy to the space, creating bright, welcoming environments. These colours work beautifully on walls, cabinets, tiles or accessories, and pair perfectly with natural materials like light wood or stone.

3. Never enough green

Nature is seeping into the bathroom! Deep green cabinets, tropical wallpaper or even a living wall bring vitality and warmth to the space. Rattan baskets, wooden shelves, textured tiles, and warm tones (sandy beige, sage green and off-white) complete the look, creating an organic and energizing atmosphere. Green is no longer just a design choice; it helps to cultivate a sense of calm and serenity.

4. A hint of retro

In 2026, retro is front and centre, with throwbacks to the 1950s and 1970s with a modern twist. Bold colours and graphic patterns bring a sense of nostalgia while keeping the space fresh and contemporary. Think playful wall art and colourful accessories that inspire a sense of fun and escape.

Bold colours and graphic patterns bring a sense of nostalgia while keeping the space fresh and contemporary.

5. The return of maximalism

Time to be bold! In 2026, bathrooms are embracing the maximalist style: a trend that celebrates colour, rich textures and individuality. Deep, saturated hues like emerald green, navy blue and brick red set a dramatic, cocooning mood. Patterns mix and mingle (geometric, floral, or vintage) coming together beautifully when tied by a unifying element. Luxurious materials such as marble, velvet and decorative ceramics add depth and character, while a few carefully chosen pieces (a vintage mirror, artwork or travel memento) give the space a personal touch.







Surfaces that define
your space



True luxury should feel effortless. Traditional tiled walls, though beautiful, demand constant upkeep. Grout lines collect residue, and frequent scrubbing becomes part of the routine. Fibo by Fleurco Wall Systems offer a refined alternative: the elevated look of tiles without the maintenance. Designed for modern living, each panel features the patented Aqualock click system, creating a seamless, 100% waterproof surface* that's as durable as it is elegant. The result is a wall that retains its beauty day after day.

*Fibo sealant is required.



Pure Oak



Beige Stone



Polished Stone



Grey Sahara



Grey Cement



Denver White




Cracked Cement



Shabby Chic



White Marble

A modern shower enclosure is the central focus, featuring a black metal frame and wood-grain panels. The shower tray is white with a central drain. The background is a plain wall, and the floor is tiled. The text "Sleek, seamless, and remarkably realistic." is overlaid in white.

Sleek, seamless,
and remarkably realistic.





New forms, same vision

Introducing two new Vespero models: the Vespero In-line & 2 sided Pivot Doors, and the Vespero Fixed Walk-in Tub Panel. Bold, architectural additions to a collection defined by clean lines and confident form.





Gun Metal + Smoked Grey

Experience the refined allure of smoked grey glass paired with a sleek gun metal finish. Designed to bring depth and sophistication to any space, this combination delivers a bold, modern aesthetic .

Featured on Closiq, Horizon, and Skyline collections.





Horizon & Skyline Access

Comfort Meets Convenience

Begin your shower experience before stepping inside. A refined opening in the fixed panel gives you easy access to the faucet, so you can adjust temperature and flow in comfort and style.





Mix & Match

Create a shower experience that's uniquely yours.

Our Mix & Match kits let you customize finish combinations on Horizon & Skyline shower doors. Each kit includes rollers, fasteners, and handles, everything you need for a flawless, personalized touch.



Mist Glass: Soft Elegance

Mist glass strikes a perfect balance, softening light, blurring edges, and bringing calm sophistication to any space. A timeless choice for modern interiors.

Offered on our Gemini Plus, Horizon,
and Skyline collections.





The Subtle Drama of Smoked Grey Glass

The quiet allure of smoked grey glass transforms your space,
offering a modern look with lasting elegance.

Complete with our Fleurco SEKUR+ Safety Protection film,
it delivers style and peace of mind in equal measure.

Available on Vespero & Closiq collections.

Designed into the bath. Designed to simplify.

Solenne OFS is an integrated overflow filler that delivers water directly into the bathtub, removing the need for a freestanding spout or external filler. When connected to a thermostatic mixing valve, Solenne OFS accepts pre-mixed water and fills the bath discreetly from within, creating a cleaner, more open bathroom.

With both the water inlet and overflow outlet concealed beneath the coloured overflow cover cap, the bath fills quietly and efficiently. Under typical household water pressure (3 bar), Solenne OFS delivers approximately 22 litres (5.8 US gallons) per minute, while offering an overflow capacity of 38 litres (10 US gallons) per minute, allowing for deep, comfortable filling, with water rising to within 1 cm of the top of the overflow cap.

Water flow is controlled entirely by the mixing valve, and Solenne OFS is often paired with a two-way mixing valve to also serve a hand shower, offering flexibility without visual clutter.

By integrating the filler into the bath itself, Solenne OFS not only enhances spatial clarity but can also reduce installation costs compared to freestanding bath taps. Interchangeable coloured cover caps allow the overflow to coordinate seamlessly with other bathroom finishes, a distinctive detail that brings cohesion to the space.

Solenne OFS makes bath filling simple, efficient, and beautifully integrated.







Step away from the norm and embrace the soft colours of Solfege

The Solfege bathtub offers the perfect balance of style & functionality. Its harmonious duo-tone design features a glossy white interior that shines with sophistication, complemented by your choice of 3 exterior finishes: Matte Rosemary Green, Matte Champagne, or Glossy White.



Choosing the perfect bathtub

The bathtub isn't just any other fixture, it's often the star of the bathroom. Whether it's your personal escape after a long day or a key part of the kids' evening routine, it needs to combine comfort, style, and functionality. But with so many options like materials, sizes, styles, and features, it can be tricky to know where to start.

Here's a quick, practical guide to help you choose the perfect tub for your needs, lifestyle and space.



A beautiful tub is nice. A comfortable tub is even better.

1. Pinpoint your needs

Before falling for that gorgeous showroom model, ask:

How will you use it? Relaxing soaks or daily use?

Who will use it? Kids, adults, or someone with mobility needs?

How often will you use it? On the daily or once in a while?

Your answers will help narrow your options.

2. Choose the right type of tub for your space

Different bathtub styles have different perks:

Alcove tub:

Perfect for small spaces, it fits neatly between three walls, often paired with a shower door.

Freestanding tub:

Makes a statement, brings a spa-like feel to your home but requires more room.

3. Materials to match comfort and durability

The material affects not only the price, but also cleaning and how it feels to the touch.

Acrylic:

Lightweight and affordable.

Solid surface:

High-end, long-lasting, with a contemporary style.

Your choice will depend on your budget, desired look and your floor's load capacity.

4. Make Comfort a Priority

A beautiful bathtub is nice, but a comfortable bathtub is even better.

Look for:

An ergonomic shape with a sloped backrest.

Enough depth (18–22 inches) for full-body immersion.

5. Consider technical and installation details

Measure carefully: Make sure the tub fits through doors and into your space.

Check the drain location: Choosing a model that matches your existing plumbing can save you money.

Consider weight: Factor in the weight of the tub when filled and occupied to ensure your floor can handle it.

6. Try before you buy

If you can, visit a showroom. Sit in different models, check how they feel and get a real sense of the size. Still unsure? Bring in a designer or plumber. Their expertise can help you avoid costly mistakes.

The perfect bathtub is all about finding the right balance between style, comfort, technical requirements and budget. Take the time to evaluate your needs, follow these tips, and you'll end up with a tub that brings you years of relaxation and satisfaction.



Aria bathtubs are more than just tubs, they're works of art





Black bathtubs bring a sense of sophistication and modern elegance to the bathroom, creating an atmosphere made for relaxation and special moments.





Ovressa joins the Aria family

Calm. Clean. Contemporary. With its rectangular volume and glossy white acrylic finish, Ovressa offers a tranquil balance of form and function.

Available in Petite and Grande sizes, it turns any bath into a serene retreat.



Cadenza

A harmonious counterpart to the rectangular Ovressa, offering a softer, simple oblong shape ideal for layouts that call for gentle curves and seamless integration.

Available in Petite and Grande sizes.





Opus deck-mounted tubs,
designed for every space

Corner Bathtubs That Maximize Space

Experience a greater sense of openness with the Sequence (left) and Capriccio (right) bathtubs. Designed to fit neatly into the corner of your bathroom, both models pair perfectly with the Gemini Plus, Horizon, and Skyline tub enclosures. Each tub includes a convenient deck area for your everyday essentials, helping you keep your space clean and clutter-free.



Smooth and sculpted, Aria Stone brings a grounded sense of luxury

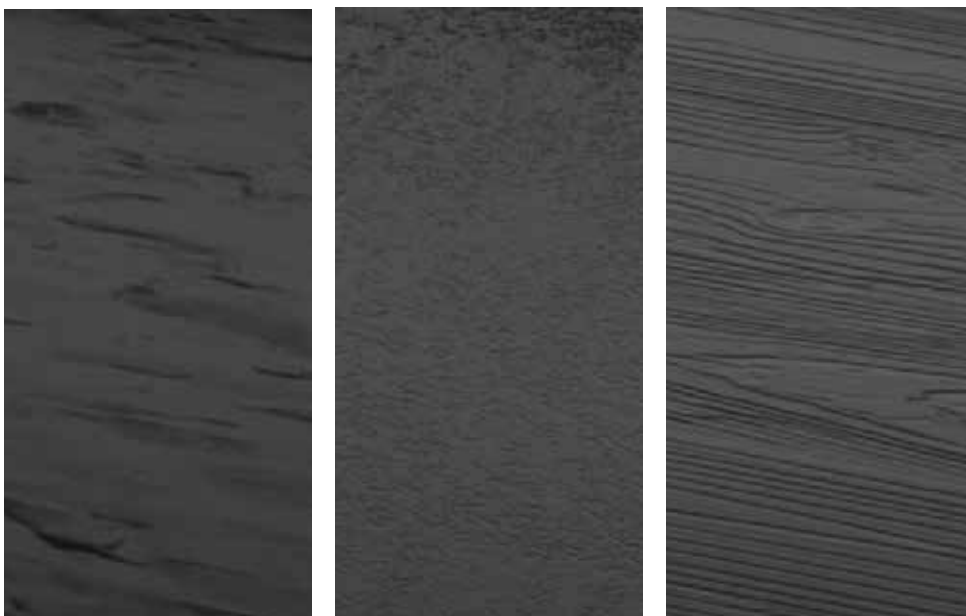
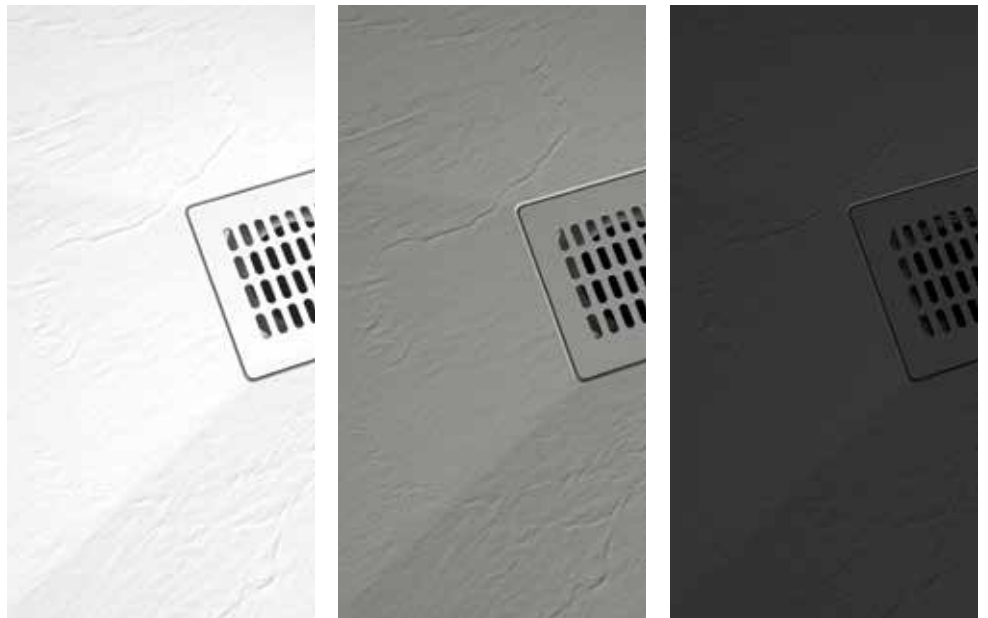




Solid surface shower bases exude an air of sophistication and offer unparalleled durability. They evoke a high-end look, often resembling natural stone, which is resonating with the ongoing trend of incorporating organic elements into bathroom design.

Experience a New Era of Modern Texture in Solid Surface Bases

Tavia 2.0 Solid Surface bases offer a sleek, minimalist approach to modern bathrooms. With a low-profile design, these bases enhance any space with clean lines, subtle elegance, and dependable performance. Offered in a slate texture with 3 matte finishes: White, Stone Grey and Black.



Aurora Solid Surface bases draw inspiration from nature, offering three luxurious textures: Slate, Stone, and Wood, each presented in a sleek matte black finish.



Luna LED mirrors deliver striking modern elegance with adjustable colour temperatures, a variety of shapes, both framed and unframed styles. An unforgettable statement in any bathroom.

Light Up Your Reflection

Vizo LED Cosmetic Mirrors brighten your beauty routine in style. Available in freestanding or wall-mounted models, each mirror features 5X magnification and a touch switch to adjust LED colour temperatures from warm to daylight, perfect for any morning or evening routine.





Efficient Storage Solutions

LED Medicine Cabinets blend sleek storage with LED mirrors, offering both function and luxury. With four models in multiple sizes, there's an option for every bathroom.

Discover the Stak Vanity collection, three distinct styles designed to elevate any space: Stak Uno, Stak Duo, and Stak Trio. Every model features a solid surface countertop with an integrated sink, creating a clean and modern look.

Stak Uno offers a simple floating design. Stak Duo features a minimalist frame with a solid surface shelf, and Stak Trio includes a freestanding frame with an added shelf and sleek towel bar. Choose from Matte Black or Brushed Gold frames, and select from three sizes to create a style that fits your space perfectly.







Niches That Maximize Space

More than storage, it's the way we make space for what matters. Choose between three practical sizes; 12" × 12", 16" × 12", or 24" × 12", with finishes available in Chrome, Brushed Stainless, Matte Black, or Brushed Gold to suit your style.





www.fleurco.com

A WORLD OF POSSIBILITIES FOR YOUR BATHROOM

Download your
digital copy

