

Guide d'installation et d'utilisation • Installation and User's Guide

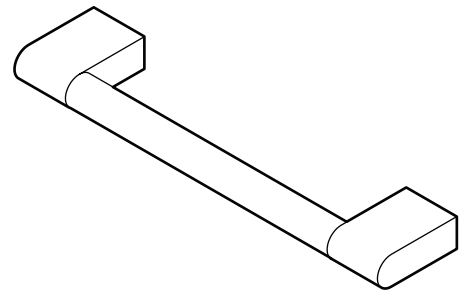
Repose pied • Foot Rest

Lire toutes les instructions attentivement avant de commencer l'installation. Le bon respect des instructions garantie une installation sûre.

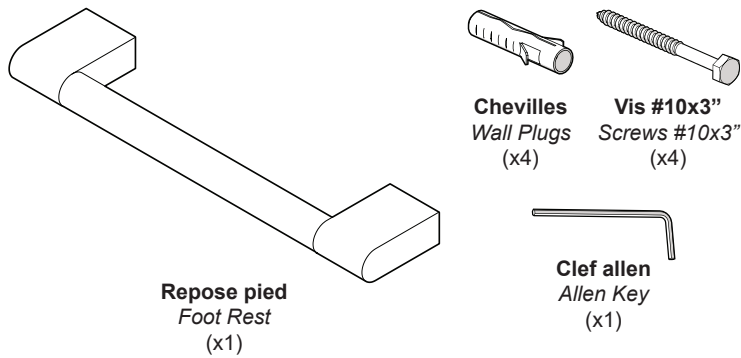
Nettoyer régulièrement la surface pour qu'elle reste brillante. Utiliser seulement un nettoyant neutre et un tissu doux. Ne pas utiliser de nettoyant chimique ou d'éponge abrasive.

Read all instructions carefully before proceeding. Following the instructions closely will ensure a safe and secure installation.

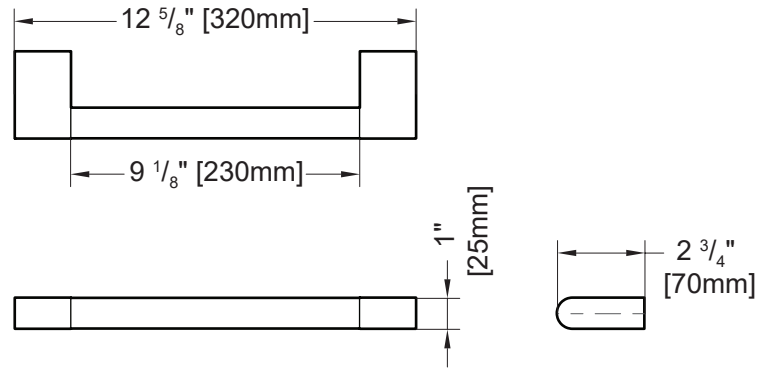
Clean the surface periodically to maintain a bright surface. Use only a mild-cleaner and soft cloth. Do not use chemicals or scouring pads.



LISTE DES PIÈCES / PARTS LISTING



CARACTÉRISTIQUES / SPECIFICATIONS



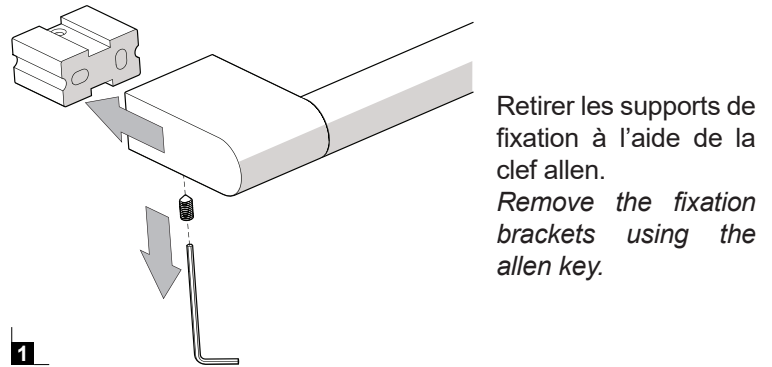
OUTILS REQUIS / REQUIRED TOOLS



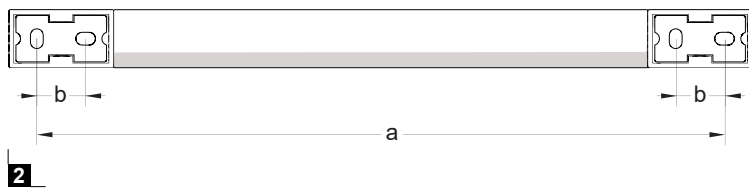
* Use a 5/16" drill bit when drilling into ceramic tiles.

* Utiliser une mèche de 5/16" pour percer des tuiles en céramique.

INSTALLATION / INSTALLATION



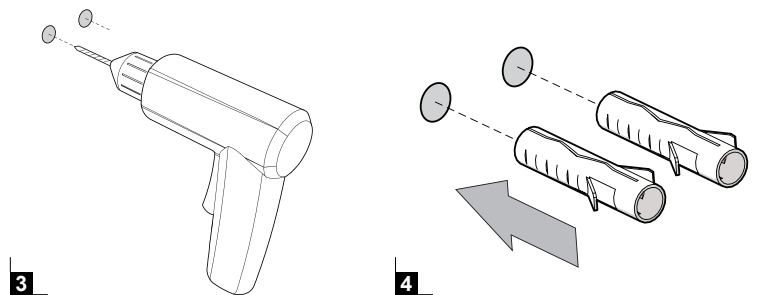
INSTALLATION / INSTALLATION



Tracer une ligne sur le mur. Mesurer les dimensions a et b ci-dessus et les reporter sur la ligne.

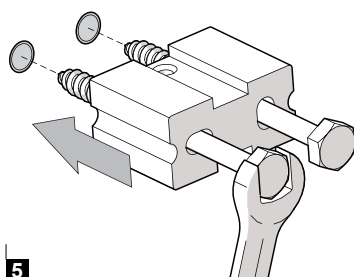
Draw a line on the wall. Measure the above dimension a and b and transfer them to the line.

INSTALLATION / INSTALLATION



Percer les trous et insérer les chevilles.
Drill the holes and insert the wall plugs

INSTALLATION / INSTALLATION



Visser les supports de fixation au mur.
Fasten the brackets to the wall.

INSTALLATION / INSTALLATION

