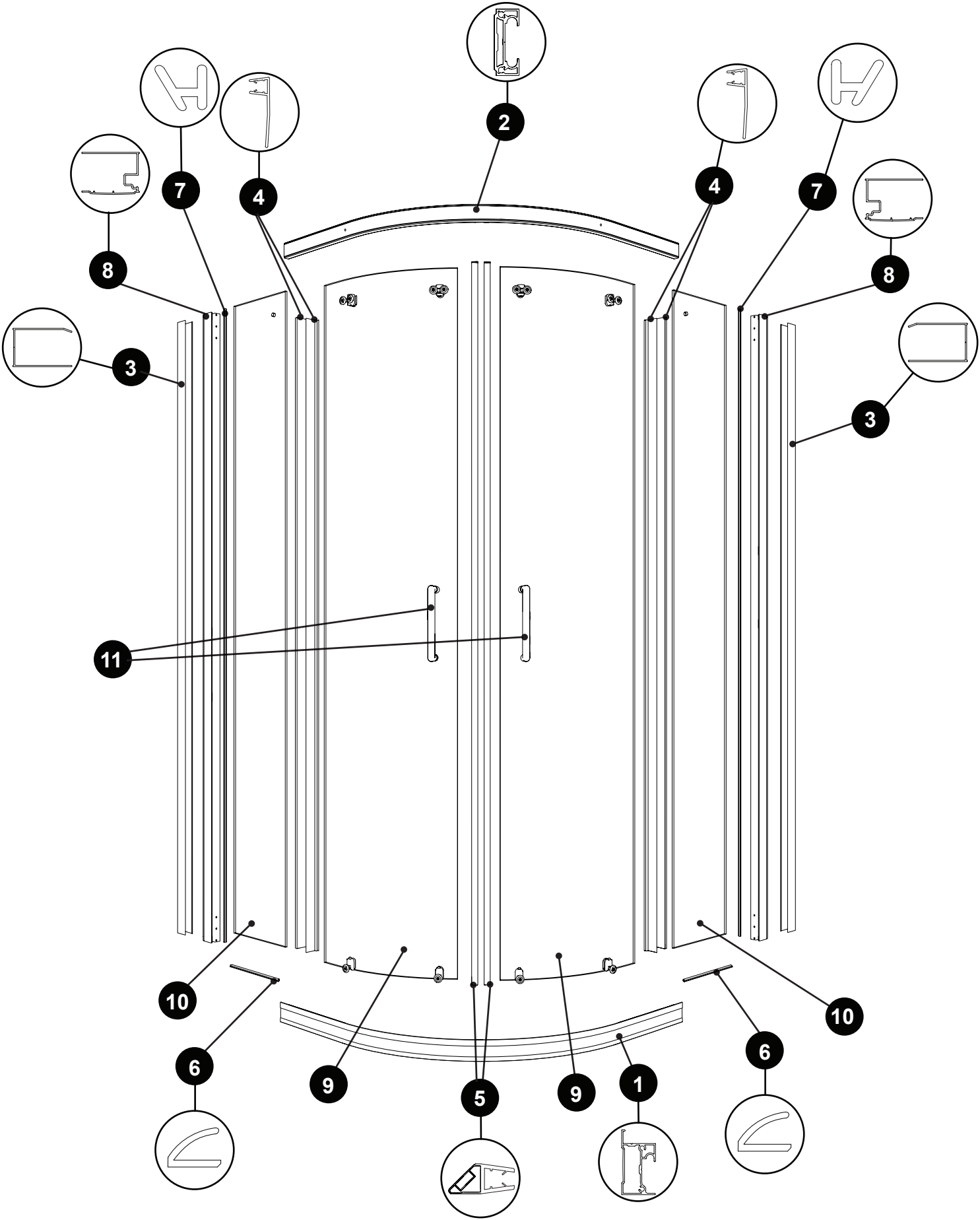
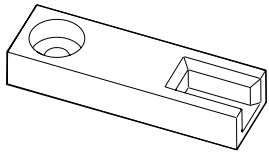


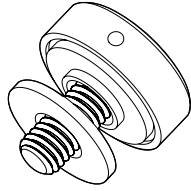
PARTS AND HARDWARE LISTING / LISTE DES PIÈCES ET QUINCAILLERIE



PARTS AND HARDWARE LISTING / LISTE DES PIÈCES ET QUINCAILLERIE



12



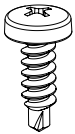
13



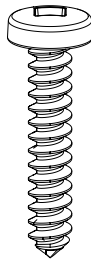
14



15



16



17



18



19



20

| ITEM | PARTS AND HARDWARE / PIÈCES ET QUINCAILLERIE | QTY |
|------|--|-----|
| 1 | BOTTOM RAIL / RAIL INFÉRIEUR | 1 |
| 2 | TOP RAIL / RAIL SUPÉRIEUR | 1 |
| 3 | WALL JAMB / JAMBAGE | 2 |
| 4 | SIDE GASKET / JOINT LATÉRAL | 4 |
| 5 | MAGNETIC GASKET / JOINT MAGNÉTIQUE | 2 |
| 6 | BOTTOM GASKET / JOINT INFÉRIEUR | 2 |
| 7 | EXTERIOR GASKET / JOINT EXTÉRIEUR | 2 |
| 8 | EXPANDER / EXTENSEUR | 2 |
| 9 | DOOR PANEL / PANNEAU DE PORTE | 2 |
| 10 | FIXED PANEL / PANNEAU FIXE | 2 |
| 11 | HANDLE BAR / POIGNÉE | 2 |
| 12 | BOTTOM SUPPORT / SUPPORT DU BAS | 2 |
| 13 | GLASS FASTENER / FIXATION DE VERRE | 2 |
| 14 | GLASS SUPPORT CAP / CAPUCHON DU SUPPORT DE VERRE | 2 |
| 15 | HOLE PLUG / BOUCHON DE TROU | 4 |
| 16 | ROUND HEAD SELF DRILLING SCREW / VIS RONDE AUTO-PERÇANTE | 10 |
| 17 | SCREW / VIS | 14 |
| 18 | SCREW CAP / CAPUCHON COUVRE-VIS | 8 |
| 19 | BACK SCREW CAP / L'ARRIÈRE DU CAPUCHON COUVRE-VIS | 8 |
| 20 | WALL PLUG / CHEVILLE | 6 |